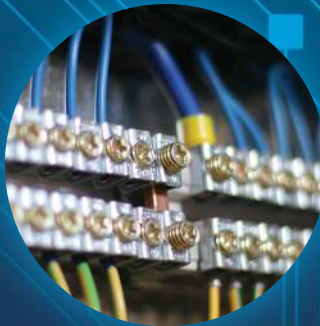


# Vos ELECTRIC INC.



**Residential | Commercial | Industrial | Tele/Data | Instrumentation**

# MISSION STATEMENT

## Values, Beliefs, and Principles



### Safety

Safety is our guiding principle during all phases of engineering, construction, operation and maintenance. The goal is an accident-free workplace.



### Quality

The highest standards set forth will result in a facility that is dependable, durable and productive.



### People

We will create a climate in which people enjoy working and feel secure; one in which innovation is valued and encouraged. We believe in the results of teamwork and a positive attitude.



### Profitability

We will follow a well-planned process for long-term operation, allowing us to continually expand capabilities to meet customer demands and satisfaction.



### Communication

We will keep lines of communication open throughout all aspects of the project; what is known to one individual is known to the team.



### Schedule

We will meet commitments and respond immediately to any situation.



### Trust

We will build and retain trust by demonstrating respect, honesty, cooperation and reliability.



### Environmental Commitment

We will execute projects to ensure regulatory compliance while being friendly to the surrounding environment.



### Customer Relations

We will foster understanding of our internal and external customers, and meet their needs by listening and asking the right questions.



### Training

We attain high quality and productivity through proper training.



### Community Involvement

Our philosophy regarding donations is simple: an investment in the communities in which we work will pay back huge dividends. We target contributions to organizations that emphasize the importance of youth, family, and community. This benefits us and others by creating a stronger, more educated, and value-balanced workforce.

The majority of our contributions go to organizations in communities where we and our clients live and work. We support those who help make us successful.

### OUR PROJECT TEAM WILL STRIVE TO:

- Create an environment in which maximum quality, productivity and reliability are achieved by the most cost-effective means
- Share a common goal through mutual respect, trust and support for each other's needs
- Achieve or surpass all goals set forth
- Assure constant improvements in productivity through training, goal setting and monitoring
- Attain the highest quality possible

# COMMUNITY INVOLVEMENT

Vos Electric takes pride in returning a generous percentage of the business' annual revenue to the communities in which we operate. Since 1985, we have been providing support for charitable and non-profit organizations. We focus our charitable giving in four areas:

- Children
- Health and Human Services
- Education
- Specific requests of employees, customers and vendors

Vos Electric, Inc. is committed to being a positive influence in the communities in which we live and work.

The communities we serve include the areas around our:

- Corporate Headquarters in Green Bay, WI
- Office in Savannah, GA
- Operating Centers throughout the United States

## Community Support Appreciation & Acknowledgements

Vos Electric has received numerous nominations for the Golden Business Partner Award on the basis of its contributions to education, the number and level of students impacted by our partnership, and how our business positively affects education in our community.

Vos Electric also is a past nominee for the Wisconsin BuildersEdge Award, which highlights community involvement, extraordinary efforts to enhance employee education, skill training and benefits, and ongoing commitment to the industry.

"It is because of the generosity of people like you and businesses like Vos Electric, Inc. who help make programs like NIE possible. Newspapers in Education is thriving at the Press Gazette thanks to you and your continued support. Thank you again!"

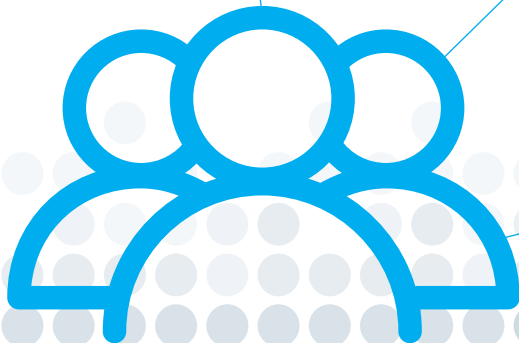
*Colleen Warner, Newspapers In Education Coordinator*

"Your company donated 50 spotlights to support deployed Marines supporting Operation Iraq Freedom. We accomplished our mission, because we found some great friends and companies like Vos Electric, Inc., who gave us loyal support along the way. Please pass on to your employees our greatest appreciation."

*Victor P Singleton, United States Marine Corps*

"Your very generous donation will help the Catholic community of West De Pere realize a dream come true with the building of a new church for our consolidated parish. The continual sharing of time, talent, and reassurance at Our Lady of Lourdes by you, your entire family and the employees of Vos Electric, Inc. is deeply appreciated"

*Rev. Conrad J. Kratz, Pastor, and Fr. James T. Baraniak, Associate Pastor, Our Lady of Lourdes Catholic Church.*



# FOSTERING QUALITY



## Experience Matters

The measure of a company is in the quality of its workforce. Vos Electric retains a committed team of professionals that provide the highest level of service excellence in the industry.

## Building Leaders

We provide growth opportunities for all employees, offering advancement and individual enrichment. Our generous benefit program includes health coverage, retirement savings and regular compensation reviews.

Under our approved apprenticeship programs, we train our employees to be electricians and instrument technicians.

## Job Security

Employees are cross-trained to maximize job security. We encourage second apprenticeships and provide any training an employee wishes to pursue. As part of our team approach, employees are encouraged to share their knowledge.

## Stable Workforce

Rather than lay off employees at the conclusion of a job, we move them to the next job site. This creates a stable workforce, builds consistency, and fosters mutually beneficial client/staff relationships. Our clients receive the same high-quality workmanship at job sites throughout the United States.

We recognize that family life is critical to employee retention and the well-being of future generations. Maximizing family time is a key consideration in job scheduling and management.



**We work in a team environment in which we expect employees to be loyal to each other rather than an individual leader. We reward their loyalty and hard work with good pay, benefits and steady employment.**

# CONTROLLING RISK

## Safety Statistics

Vos Electric employees understand that safety is a performance expectation. Everyone is responsible for accident prevention and held accountable to that standard.

In addition to avoiding personal injury, accident prevention minimizes damage to equipment, facilities and materials.

Elements of Vos Electric Safety:

- Individual Project Safety Analysis
- Unannounced Safety Monitoring
- Corporate Safety Director
- Safety Manual
- Regular Safety Training
- Safety Incentives
- Safety Records
- Zero Tolerance Drug Policy
- Random Substance Screening



We promote accident prevention by engineering safety into our work, mandating education and enforcing safety policies.

Safety demands commitment at all levels, including officers, team members and clients.

## Safety Record

	2005	2006	2007	2008	2009	2010	2011	2012	2013	2014	2015	2016
Number of Injury Related Fatalities	0	0	0	0	0	0	0	0	0	0	0	0
Number of Lost Work Day Cases for Injuries	0	0	1	0	0	0	1	0	0	0	0	0
Number of Restricted Work Day Cases for Injuries	1	1	1	2	1	1	1	1	1	1	1	2
Number of Injuries w/o Loss of Restricted Work Days	4	3	2	2	2	1	0	1	0	0	0	0
Number of Illness Related Fatalities	0	0	0	0	0	0	0	0	0	0	0	0
Number of Lost Work Day Cases for Illness	0	0	0	0	0	0	0	0	0	0	0	0
Number of Restricted Work Day Cases for Illness	0	0	0	0	0	0	0	0	0	0	0	0
Number of Illnesses w/o Lost or Restricted Work Days	0	0	0	1	0	0	0	0	0	0	0	0
Total Number of Cases on the OSHA 200	5	4	4	5	3	2	2	2	1	1	1	2
Incident Rate/Recordable Rate	1.41	1.11	.93	1.26	1.11	.65	.84	.63	.41	.35	.32	.54

## Insurance Modifier Rate (EMR)

2004	2005	2006	2007	2008	2009	2010	2011	2012	2013	2014	2015	2016
.84	.84	.84	.67	.63	.63	.65	.65	.65	.65	.65	.67	.62

## Employee Hours Worked

2005	2006	2007	2008	2009	2010	2011	2012	2013	2014	2015	2016
709,297	722,998	856,732	791,462	539,087	615,217	478,819	634,447	491,923	568,496	620,115	735,608

# RECENT PROJECTS & REFERENCES

## RECENT PROJECTS OVER \$5,000,000.00

Location	Scope of Work
South	Grass Roots O.S.B. Plant
Northeast	Paper Machine E&I and Lube Oil Hydraulic Tubing
South	Production Facility
South	Grass Roots Cement Plant
Midwest	Wildfire Paper Machine Project
South	Grass Roots O.S.B. Plant
Midwest	Mild Expansion and #15 Paper Machine
South	Plywood Plant Expansion
South	Grass Roots Paper Mill Construction
Northeast	Medium Density Fiber Board Plant
South	Grass Roots Paper Mill Construction

## RECENT PROJECTS UNDER \$5,000,000.00

Location	Scope of Work
South	No 5 Hood Replacement Shutdown
South	TPO Line
South	Clarifier Project
Northeast	Power Distribution
South	No 5 Brown Stock Expansion
South	No 1 P.M. DCS Upgrade
Northeast	(5) PM Rebuild, (6) refiners (3) Pulpers, E&I
Northeast	#4 & #5 Paper Machine Rebuild Electrical and Instrumentation
Northeast	Instrumentation Technicians Project
Midwest	#1 & #2 Paper Machine E&I Installation Electrical and Instrumentation

## Why Choose Vos?

- Family owned since 1985, with a workforce of more than 600 operating out of 100,000 square feet of shop and office facilities
- We maintain a higher retention rate for our craftsman as a result of our benefit plan and company philosophy of actively encouraging cross-training
- We are one of the largest pulp and paper industrial electrical contractors in the United States, with more tissue machine installations than any of our competitors
- In-house electrical engineering capability
- Our safety record exceeds industry standards and earned numerous awards
- We combine on-the-job training with education to provide our people with up-to-date information through our approved apprenticeship programs
- Close project monitoring by company owners
- Low risk, scheduling certainty
- Access to volume buying
- Low cost, project schedule flexibility
- Construction-driven engineering

## References

JE Dunn Construction  
Justin Vanderbrink, Vice President  
912-335-4011

Clayco  
Anthony Harden, Vice President  
864-354-2365

Pine Ridge Engineering  
Dan Platkowski  
920-639-9866

Baisch Engineering  
Kurt Kloehn  
920-766-3521 ext. 106

Schuh Construction, Inc.  
Karl "Pudge" Schuh  
920-833-6465

Miron Construction  
Corey Brumbaugh  
920-969-7056

Smet Construction  
Scott Smet  
920-532-3828

Gulfstream Aerospace  
Bill Cantwell  
912-429-3972

Martco Partnership  
Jonathan Martin  
318-448-0405

# COMPLETING PROJECTS ACROSS THE NATION



LICENSED IN THE FOLLOWING STATES					
Alabama	Georgia	Louisiana	Nebraska	Ohio	Tennessee
Arizona	Illinois	Maryland	Nevada	Oklahoma	Texas
Arkansas	Indiana	Michigan	New Jersey	Oregon	Utah
California	Iowa	Minnesota	New York	Pennsylvania	Virginia
Connecticut	Kansas	Mississippi	North Carolina	South Carolina	Wisconsin
Florida	Kentucky	Missouri	North Dakota	South Dakota	Wyoming

# COMMERCIAL

## Safety

Our top priority as a commercial electrical contractor is safety, regardless of project size. We do not consider a project successful unless everyone comes home safely.

## Pricing

The Vos Electric pricing department keeps a close eye on market changes to ensure our pricing is fair and competitive, and you always get the best deal.

## Telecommunications

Our Registered Communications Distribution Designer (RCDD) and other in-house personnel can assist you in value engineering your current design, or if you are starting from scratch, contribute our design and build experience.

- Our capabilities include: Singlemode and Multimode Fiber; Data Center design/installation; wireless networking; building automation; video/sound; telephony; 10Gb copper and fiber; Cat 6, 6a, 5e copper; and fire/security systems.

## Experience

Vos Electric's "Core Crew" of employees has worked together for more than 25 years, and they willingly share their knowledge and experience with new employees to ensure your project receives the highest level of proficiency. These talented and dedicated individuals are multi-craft knowledgeable, providing a broad base of expertise for any situation.

## Design/Build & Value Engineering

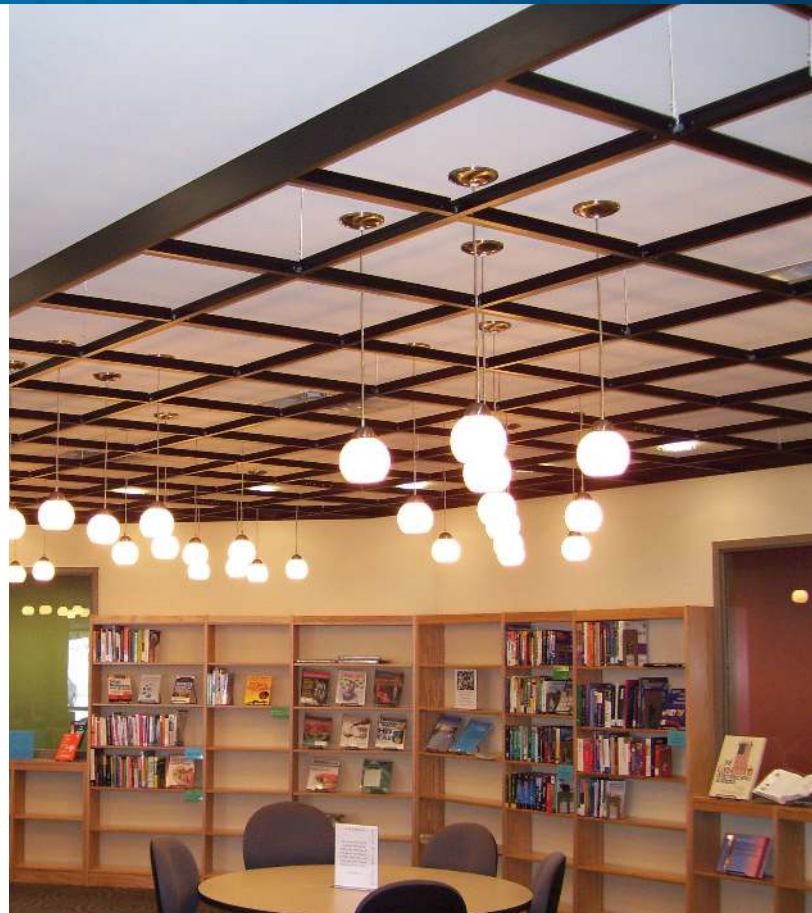
Your budget and production requirements are at the forefront of the design process. From project conception through turning on the power at completion, our in-house design team will work with you to bring anything you can imagine to life.

## Technology

Vos Electric utilizes the latest technology in our design, estimating, project management and construction processes to help you minimize energy consumption. We also can help you implement energy saving practices to achieve LEED credits on your next project.



# COMMERCIAL



# INDUSTRIAL

## Safety

We are proud of our exemplary safety record as an industrial electrical contractor. We do not consider a project successful unless everyone comes home safely.

## Quality

We deliver high quality in every project, and our customers appreciate it. That is why the largest part of our industrial business comes from repeat customers.

- We adhere to a Quality Assurance/Quality Control (QA/QC) program that is time-tested, yet flexible enough to adjust to current standards.
- Vos uses QA/QC documents that are industry standard to ensure only the highest quality.

## Schedule

Our teams work hard to meet the demands of our customers' schedules, making every effort to ensure our installations do not interfere with your business.

- We maintain a database that tracks the progress of all industrial installations, which reports back to the customer and enables you to follow our progress.
- We provide forecasts that show what needs to happen in order to complete a project on time or early, allowing you the ability to meet market demands

## Experience

Vos Electric's "Core Crew" of employees has worked together for more than 25 years, and they willingly share their knowledge and experience with new employees to ensure your project receives the highest level of proficiency. These talented and dedicated individuals are multi-craft knowledgeable, providing a broad base of expertise for any situation.

## Versatility

Vos Electric is a licensed electrical contractor in approximately 30 states, with a proven ability to complete a wide range of projects.

- We install hydraulic, lube oil, pneumatic machine, pneumatic valve and instrument impulse tubing. We also have experience working with poly, stainless steel (all grades), copper and specialty tubing. Leak testing also is available.
- Telecommunication wiring, including fiber optics, Ethernet cabling in industrial offices, and industrial process communication wiring such as Profibus, Fieldbus, DeviceNet, Modbus, Controlnet, Industrial Ethernet, or other communication protocols.

Vos also has electrical engineers on staff that can assist in process controls programming.

## Constructability

Our team of electrical engineers assists our clients with constructability issues early in the design phase, which results in lower project costs without compromising quality.



# INDUSTRIAL



# RESIDENTIAL

## Illuminated & Wired

It's the little things that make a house a home, such as that perfectly placed outlet next to your favorite chair or that lighting layout that emphasizes the beauty of your home. Vos Electric has been designing systems for custom-built homes since 1985. We are an experienced residential electrical contractor that understands the benefits of systems that bring your home to life.

## Get Plugged In

No job is too big or too small for our residential division. We provide quality work at a competitive price regardless of whether your project involves a minor remodel or new construction of the biggest house in town. As a family-owned company, we promise the same prompt, friendly service we expect to receive in our own homes. Our "Core Crew" of long-time personnel head up teams that provide the detailed work you deserve.

## An Eye on Budgets

Your home or rental property is a significant investment that requires an adherence to budget. Our designers and engineers will work with you to ensure there are no surprises.

## Our Services:

- New Construction (single and multi-family)
- Remodeling
- Custom Lighting
- Landscape Lighting
- Service Work
- Phone, Video, Data
- Security
- Sound and Entertainment Systems
- Whole Home Automation
- Wireless Networks



# PULL & TERM SYSTEM

## Vos Generated Pull & Term System Consists of the Following:

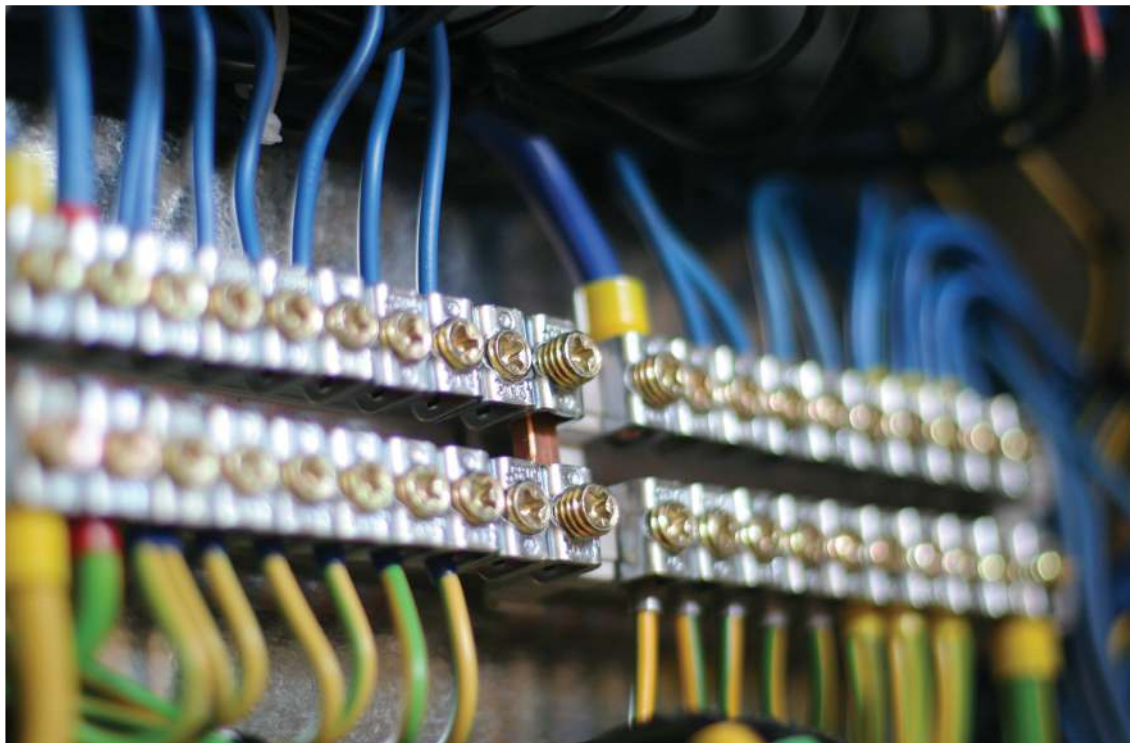
After receiving the cable schedule in Excel format, we convert the information into our own customized software. We assign each cable a four-digit Vos ID number for easy reference, and then assemble the pull folder with the following information:

- Vos ID number
- Engineered cable numbers
- Size and type of cable
- "From" and "to" location with description
- Two cable ID tags (one for each end of the cable for pulling)
- After the cable is pulled, each folder is returned to the office and signed by the foreman for that particular area

Benefits from our Pull & Term System are that our software will check for:

- Proper wire and size for motors
- Duplication of wire numbers
- Duplication of "From" and "To" termination locations
- Enough conductors in each cable

We have used this system for more than 20 years to ensure we do not overlook any cables that need to be installed, enabling Vos Electric to meet or exceed all job completion dates.



# PULL & TERM SYSTEM

## Project Status & Reporting System

Once we receive an 'Issued For Construction' cable schedule in Excel format we create the Project Status & Reporting System for your particular project with our own customized software. We assign each cable a four digit VOS ID number for easy reference and create a Pull Sheet, FROM Termination Sheet, and a TO termination sheet for every cable. Each sheet has the proper labels already attached to the sheets, so a cable will never not be labeled.

V1026		PULL SHEET VOS ELECTRIC		V1026	
PROJECT: DCS UPGRADE					
AREA: LINE 1 - MOTOR SIGNALS					
CABLE SCHEDULE: LINE 1 - MOTOR SIGNALS					
CABLEID: 115-090-071.1C					
FROM: MCC 114-087-005 115-090-071.1 MOTOR CONTACTOR/ALX MOTOR CONTACT					
TO: 115-090-0077-4R WASHEN 1 DCS CABINET					
REMARKS:					
AREA: LINE 1 - MOTOR SIGNALS					
PULL: SCFH					
TYPE: MOV TC					
CABLE ID FROM LOCATION TO LOCATION					
115-090-071.1C MCC 114-087-005 115-090-071.1 MOTOR CONTACTOR/ALX MOTOR CONTACT 115-090-0077-4R WASHEN 1 DCS CABINET					
TOTAL FOOTAGE INSTALLED: _____ (FOREMAN IS RESPONSIBLE TO MAKE SURE ALL INFORMATION IS CORRECT!!)					
DATE: _____ SIGNATURE: _____ START FOOTAGE: _____ FT					
(RETURN SIGNED PULL SHEET TO OFFICE !!) END FOOTAGE: _____ FT					
Wednesday, March 5, 2017 7:13 AM Page 27 of 300					

VOS ELECTRIC		FROM TERM SHEET		V1026	
PROJECT: DCS UPGRADE					
AREA: LINE 1 - MOTOR SIGNALS					
SYSTEM: LINE 1 - MOTOR SIGNALS					
CABLEID: 115-090-071.1C					
FROM: MCC 114-087-005 115-090-071.1 MOTOR CONTACTOR/ALX MOTOR CONTACT					
TO: 115-090-0077-4R WASHEN 1 DCS CABINET					
REMARKS:					
AREA: LINE 1 - MOTOR SIGNALS					
PULL: SCFH					
TYPE: MOV TC					
WIRENUM AWG COLOR CORE TO TERMINAL # FROM TERMINAL #					
115-090-071.1-1 BLK 1 1002-F15 1					
115-090-071.1-2 BLK 2 1002-F15 2					
115-090-071.1-3 BLK 3 1002-F15 3					
115-090-071.1-X2 GRN 4 1002-F15 4					
115-090-071.1-5P YEL 5 5P 5P					
115-090-071.1-1					
115-090-071.1-2					
115-090-071.1-3					
115-090-071.1-X2					
115-090-071.1-5P					
DATE: _____ SIGNATURE: _____					
(RETURN SIGNED TERMINATION SHEET TO OFFICE !!)					
Wednesday, March 5, 2017 7:13 AM Page 27 of 300					

VOS ELECTRIC		TO TERM SHEET		V1026	
PROJECT: DCS UPGRADE					
AREA: LINE 1 - MOTOR SIGNALS					
SYSTEM: LINE 1 - MOTOR SIGNALS					
CABLEID: 115-090-071.1C					
FROM: MCC 114-087-005 115-090-071.1 MOTOR CONTACTOR/ALX MOTOR CONTACT					
TO: 115-090-0077-4R WASHEN 1 DCS CABINET					
REMARKS:					
AREA: LINE 1 - MOTOR SIGNALS					
PULL: SCFH					
TYPE: MOV TC					
WIRENUM AWG COLOR CORE TO TERMINAL # FROM TERMINAL #					
115-090-071.1-1 BLK 1 1002-F15 1					
115-090-071.1-2 BLK 2 1002-F15 2					
115-090-071.1-3 BLK 3 1002-F15 3					
115-090-071.1-X2 GRN 4 1002-F15 4					
115-090-071.1-5P YEL 5 5P 5P					
115-090-071.1-1					
115-090-071.1-2					
115-090-071.1-3					
115-090-071.1-X2					
115-090-071.1-5P					
DATE: _____ SIGNATURE: _____					
(RETURN SIGNED TERMINATION SHEET TO OFFICE !!)					
Wednesday, March 5, 2017 7:13 AM Page 27 of 300					

When each one of our electricians finishes pulling or terminating a cable they will sign and date the sheet and return them to the main office. There, the information will be entered into the PSRS. This system will track every individual cable and report the status of each one with these five categories. Each category is given a weighted percentage to ensure total accuracy.

VOS ELECTRIC INC.	
3131 Market St. Green Bay, WI 54304	
920-336-0781 Fax: 920-336-0792	
Project Status and Reporting System	
PROJECT NAME	
Import Project Schedule XLS Files	
Query Database	
Pull Sheets	
Pulls Remaining	
Termination Sheets	
Edit/Add Record(s)	
System Reports	
Marking Labels	
Project Daily Log	
QA/QC	
Safety	
VOS Electric Procedures & Forms	
System Maintenance	
About	
Database Explorer	
Close Application and Exit	
R:BASE Session Printer: HP LaserJet 5100 PCL 5	
Select Printer ...	
You are logged in as tftgerald	
IP Address: 172.16.1.119	
Accessing data from COMPUTER-411	

### Categories:

1. PIPED – Is the raceway install for that specific cable.
2. PULLED – Is that specific cable pulled to and from the proper destination?
3. FROM – Is that specific cable terminated at the FROM location.
4. TO – Is that specific cable terminated at the TO location.
5. TESTED – Has that specific cable been to verify it is coming from and going to the proper users.

Our system is able to produce any type of report the client would like to see:

- Overall project completion percentage.
- System status report, showing the percentage complete of a certain system.
- How many cables are left to pull, or terminate in a system or area.
- Forecast hours to complete the project for manpower projections.
- Contains all safety forms and videos.
- Contains all company QA/QC Forms.
- Contains a Project Daily Log, to keep a log of all the daily activities that occur.
- Enables the user to create 2"x4" marking labels, to identify the task for particular devices.
- Keeps track of how many cables of each type that still needs to be pulled, this makes ordering cable very easy.

## PULL & TERM SYSTEM

## Sample Reports From Our Project Status & Reporting System

## VOS Electric

### All Systems Short Status

System	Description	System							
		% Complete	Total Cables	Cables to Pull	Appt	Pulled	TFrom	TTo	Tested
0001	Virgin Pulper Conveying	42.06 %	70	32	26	38	10	25	26
0002	No.2 Virgin Pulper	94.33 %	27	2	23	25	22	13	23
0003	Softwood Circuit	84.33 %	85	13	72	72	71	69	72
0004	Hardwood Circuit	80.49 %	58	11	47	47	45	45	47
0005	Air Layer Blend Chest	100.00 %	22	0	22	22	22	22	22
0006	Air Layer Machine Chest	99.53 %	17	0	17	17	17	16	17
0007	Core Layer Blend Chest	100.00 %	19	0	19	19	19	19	19
0008	Core Layer Machine Chest	98.59 %	17	0	17	17	16	15	17
0009	Dryer Layer Blend Chest	100.00 %	17	0	17	17	17	16	17
0010	Dryer Layer Machine Chest	98.82 %	17	0	17	17	17	16	17
0011	Air Layer Fan Pump	36.64 %	20	12	7	8	7	6	7
0012	Core Layer Fan Pump	35.00 %	20	13	7	7	7	7	7
0013	Dryer Layer Fan Pump	34.66 %	20	13	7	7	7	6	7
0014	Head Box Dilution Fan Pump	96.46 %	20	0	20	20	19	12	20
0015	Rich White Water Chest	98.86 %	14	0	14	14	14	12	14
0016	Bloom Screen Circuit	93.28 %	25	1	23	24	22	23	23
0017	Flume Rollout Circuit	92.00 %	1	0	1	1	1	0	1
0018	DAF Supply Tank and Pump	100.00 %	4	0	4	4	4	4	4
0019	DAF	90.62 %	29	2	27	27	26	18	4
0020	Clear Water Chest	100.00 %	20	0	20	20	20	20	20
0021	3 BAR CWW Former Pump & Showers	77.68 %	19	4	15	15	14	13	15
0022	28 BAR CWW Former Pump & Showers	91.64 %	11	0	10	11	8	8	10
0023	35 BAR Former Pump & Showers	96.80 %	5	0	5	5	4	4	5
0024	LP Seal Water Pumps and Loop	100.00 %	9	0	9	9	9	9	9
0025	Excess White Water Chest and Pump	99.00 %	8	0	8	8	8	7	8
0026	Dirty TAD System	85.71 %	7	1	6	6	6	6	6
0027	Clean TAD Tank	100.00 %	2	0	2	2	2	2	2
0028	No. 1 Seal Pz	20.00 %	4	2	0	2	0	0	0
0029	35 BAR TAD Pump & Showers	96.80 %	5	0	5	5	4	4	5
0030	13 BAR Former Pump and Showers	96.80 %	5	0	5	5	5	5	5
0031	Secondary Approach Screen System	92.94 %	17	0	15	17	15	15	15
0032	TMG High Speed Camera System	5.21 %	32	49	3	3	3	0	3
0033	Site Site Security / Camera System	100.00 %	1	0	1	1	1	1	1
0034	8 BAR TAD Pump & Shower Water	100.00 %	2	0	2	2	2	2	2
0035	35 BAR TAD Pump & Shower Water	97.09 %	11	0	11	11	9	9	11

Tuesday, March 7, 2017 3:10 PM

Page 1 of 6

[illegible]

Overall Status									
Mark Completed									
VOSID	Area	Cable ID	Pped	Puled	TTo	TFrom	Tested	DateComplete	
V1000	6000	DS05001.600-SWG0005.300-F1	1	1	1	1	1		
V1001	6000	DS05001.600-SWG0005.300-F2	1	1	1	1	1		
V1002	6000	DS05001.600-SWG0005.300-F3	1	1	1	1	1		
V1003	6000	DS05001.600-SWG0005.300-F4	1	1	1	1	1		
V1004	6000	DS05001.600-SWG0005.300-F5	1	1	1	1	1		
V1005	6000	DS05001.600-SWG0005.300-F6	1	1	1	1	1		
V1006	6000	DS05001.600-SWG0005.300-F7	1	1	1	1	1		
V1007	6000	DS05001.600-SWG0005.300-F8	1	1	1	1	1		
V1008	6000	DS05001.600-SWG0005.300-F9	1	1	1	1	1		
V1009	6000	DS00002.600-MGR0001.600-F	1	1	1	1	1		
V1010	6004	CP0204.520-CP0815.520-P	1	1	1	1	1		
V1011	6004	MCC0006.510.05F-MC00118.510-M	1	1	1	1	1		
V1012	6004	MCC0006.510.053-MC00117.510-M	1	1	1	1	1		
V1013	6004	MCC0006.510.094-MC00116.510-M	1	1	1	1	1		
V1014	6004	MCC0006.510.06C-MC00115.510-M	1	1	1	1	1		
V1015	6004	MCC0006.510.06F-MC00114.510-M	1	1	1	1	1		
V1016	6004	MCC0006.510.063-MC00113.510-M	1	1	1	1	1		
V1017	6004	MCC0006.510.094-MC00074.520-C	0	0	0	0	0	12/29/2015	
V1018	6004	MCC0006.510.094-MC00074.520-M	0	0	0	0	0	12/29/2015	
V1019	6004	MCC0006.510.07D-TRU0012.510-P	1	1	1	1	1		
V1020	6004	MCC0006.510.073-MC00072.520-C	1	1	1	1	1		
V1021	6004	MCC0006.510.073-MC00072.520-M	1	1	0	1	1		
V1022	6004	MCC0006.510.08D-WIR00024.510-P	0	0	0	0	0		
V1023	6004	MCC0006.510.084-CP0204.520-P	1	1	1	0	0		
V1024	6004	MCC0006.510.084-TRU0011.510-P	1	1	1	1	1		
V1025	6004	MCC0006.510.09D-WIR0001A.510-P	0	0	0	0	0		
V1026	6004	MCC0006.510.094-WIR00013.510-P	0	0	0	0	0		
V1027	6004	MCC0006.510.10F-MC01635.510-P	1	1	1	1	1		

OVERALL PROJECT SHORT STATUS					
<b>PIPED</b>		<b>PULLED</b>	<b>TFROM</b>	<b>TTO</b>	<b>TESTED</b>
TOTALS:	3526	3712	3428	3270	3526
					TOTAL CABLES: 4365
PERCENT COMPLETE:	80.8%	85.0%	78.5%	74.9%	80.8%
					CABLES LEFT TO PULL: 653
OVERALL STATUS % COMPLETE					81.8%
<input type="button" value="PRINT..."/> <span style="float:right;">03/07/2017 06:19 PM</span> <input type="button" value="DONE"/>					

### Labor Hours to Complete Status

<b>Project:</b>	PROJECT NAME
<b>Project Manager:</b>	Todd M. Fitzgerald
<b>Projection Date:</b>	03/07/2017
Labor Hours Left to Install Conduit to Complete Status	9,339
Labor Hours Left to Pull Cable to Complete Status	6,026
Labor Hours Left to Term From to Complete Status	1,531
Labor Hours Left to Term TO to Complete Status	1,837
Labor Hours Left to Test Cables to Complete Status	419
<b>Total Labor Hours to Complete Status</b>	<b>19,152</b>
<input type="button" value="PRINT..."/> <span style="float:right;"><input type="button" value="DONE"/></span>	

### Labor Hours Used and Forecasted

Project Name:	PROJECT NAME	Total Labor Hours:	186,197
Category	Hours Per Bid	Hours Spent	Forecasted Hours
Grounding	1,660	1,500	40
Equipment	15,095	13,950	1,165
Lights/Bec	14,075	10,875	2,240
Cable Tray	20,453	19,503	40
Status	115,439	85,480	19,152
Instrumentation	10,667	12,277	4,800
Mob/Demob	0	0	0
(FCR's)	0	0	0
<b>Totals:</b>	<b>186,197</b>	<b>143,505</b>	<b>27,437</b>
		<b>15,175</b>	<b>DONE</b>
<input type="button" value="PRINT..."/>			

# INSTRUMENTATION

## Installation Through Verification

Vos Electric's expertise as an instrumentation contractor includes highly trained technicians in instrumentation of all types of systems:

- Flow
- Temperature
- Pressure
- Weight
- pH
- Vacuum

Instrument checkout, tagging and field verification of existing instrumentation are important aspects of a complete instrumentation program. Our team performs process control system checkouts (PLCs, DCS, etc.), system walk-downs and drawing verification (Piping & Instrumentation Drawings), along with leak testing, vibration analysis, control panel fabrication and pneumatic panel fabrication.

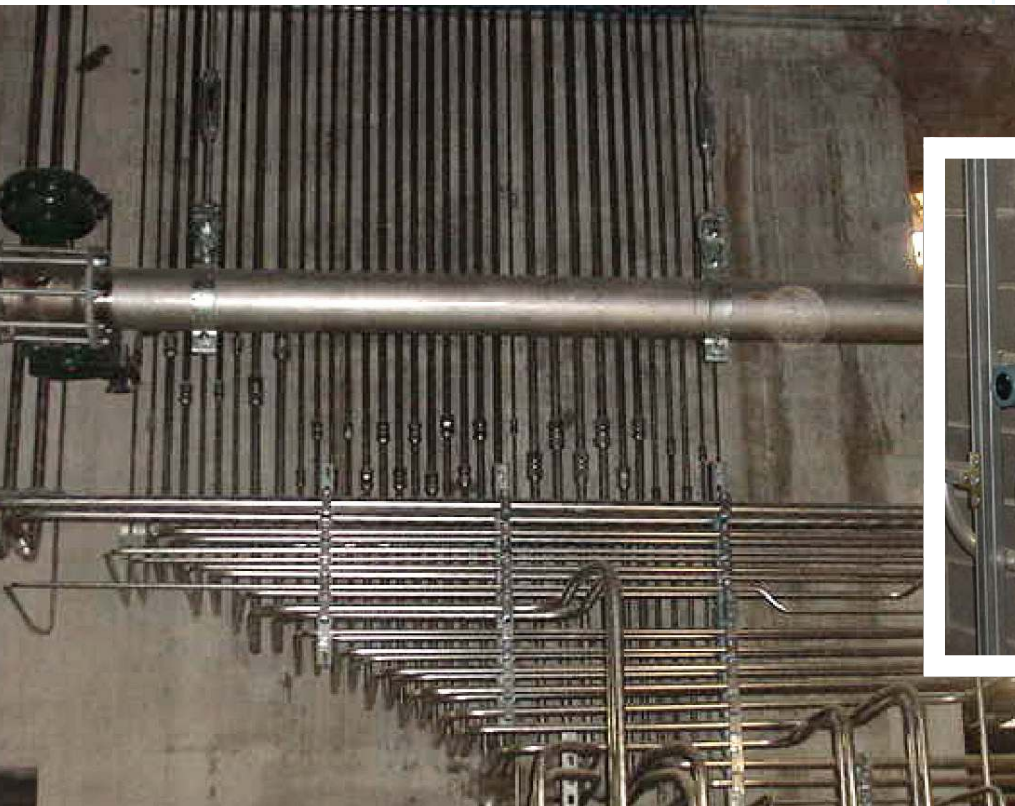
Our specialists perform installation, calibration, loop tuning and wiring, along with instrument set-up for a wide range of brands including:

- HART digital protocol
- Fieldbus Foundation
- Foxboro Eckardt

## Precision Bent Tubing

Vos's computerized bending machine creates precision tubing for numerous applications:

- Pneumatic tubing
- Hydraulic tubing
- Lube oil tubing
- Grease system tubing
- Instrument air, impulse and process connection tubing
- Chemical distribution tubing
- Small bore tubing for miscellaneous services (water, high-pressure showers, pump seal water connections, etc.)
- Small bore copper pipe and poly tube installation



## Contact Us

### **Commercial/Telecommunications/Residential**

**William C. Bain** Commercial ~ Green Bay location  
Email: [bbain@voselectric.com](mailto:bbain@voselectric.com)

**Ryan Van Den Heuvel** Residential ~ Green Bay location  
Email: [ryanvdh@voselectric.com](mailto:ryanvdh@voselectric.com)

**Craig Wery** Commercial ~ Green Bay location  
Email: [cwery@voselectric.com](mailto:cwery@voselectric.com)

**Tad Dillon** Commercial ~ Savannah location  
Email: [tdillon@voselectric.com](mailto:tdillon@voselectric.com)

**Butch Piontek** Telecommunications ~ Green Bay location  
Email: [bpiontek@voselectric.com](mailto:bpiontek@voselectric.com)

**Jim Peeters** Residential ~ Green Bay location  
Email: [jpeeters@voselectric.com](mailto:jpeeters@voselectric.com)

### **Industrial**

**Brian Donlon** ~ Green Bay location  
Email: [bdonlon@voselectric.com](mailto:bdonlon@voselectric.com)

**Steve Kussow** ~ Savannah location  
Email: [skussow@voselectric.com](mailto:skussow@voselectric.com)

**Ronnie Van Den Heuvel** ~ Green Bay location  
Email: [rvandenheuvel@voselectric.com](mailto:rvandenheuvel@voselectric.com)

**Todd Fitzgerald** ~ Green Bay location  
Email: [tfitzgerald@voselectric.com](mailto:tfitzgerald@voselectric.com)

**Carl Mooren** ~ Green Bay location  
Email: [cmooren@voselectric.com](mailto:cmooren@voselectric.com)

**Dan Haese** ~ Green Bay location  
Email: [dhaese@voselectric.com](mailto:dhaese@voselectric.com)

### **Officers**

**Tim Van Den Heuvel**  
President

**Butch Piontek**  
Secretary

**William C. Bain**  
Vice President

**Raymond Van Den Heuvel II**  
Treasurer

**3131 Market Street**  
**Green Bay, WI 54304**  
**Phone: 920.336.0781**  
**Fax: 920.336.0792**

**118 Coleman Blvd.**  
**Savannah, GA 31408**  
**Phone: 912.748.8077**  
**Fax: 912.748.5544**

**[voselectric@voselectric.com](mailto:voselectric@voselectric.com) | [www.voselectric.com](http://www.voselectric.com)**



**Vos**  **ELECTRIC INC.**

3131 Market Street  
Green Bay, WI 54304  
Phone: 920.336.0781  
Fax: 920.336.0792

118 Coleman Blvd.  
Savannah, GA 31408  
Phone: 912.748.8077  
Fax: 912.748.5544

Email: [voselectric@voselectric.com](mailto:voselectric@voselectric.com) | [www.voselectric.com](http://www.voselectric.com)